

CDMA2000 1X EV-DO Wireless Data Terminal User Guide

This User Guide applies to Wireless Data Terminal of MG478 .

Copyright Statement

Copyright © 2007 by ZTE Corporation

All rights reserved.

No part of this publication may be excerpted, reproduced, translated or utilized in any form or by any means, electronic or mechanical, including photocopying and microfilm, without the prior written permission of ZTE Corporation.

ZTE Corporation reserves the right to make modifications on print errors or update specifications in this manual without prior notice.

V1.2, Jua, 2007

Table of Contents

1. Introduction	1
2. Specification.....	1
3. Precautions	1
4. Appearance	2
4.1 Introduction	2
4.2 Operation Guide of Data Cable	2
5. Install and Uninstall.....	3
5.1 Windows 2000	4
5.1.1 Install.....	4
5.1.2 Uninstall.....	8
5.2 Windows XP.....	9
5.2.1 Install.....	9
5.2.2 Uninstall.....	13
5.3 Manually Install Through Other USB Port.....	14
5.3.1 Windows 2000.....	14
5.3.2 Windows XP	14
6. Run the Application	20
7. Connect/Disconnect.....	21
8. Connection Records.....	22
9. Setting.....	23
10. Help.....	25
11. Connect to the Website	25
12. Trouble-shooting.....	26

1. Introduction

Thank you for choosing MG478 CDMA2000 1X EV-DO Wireless Data Terminal (hereinafter referred to as Data Terminal) of ZTE Corporation.

The Data Terminal equips with a standard USB interface and supports both CDMA2000 1X EV-DO and CDMA2000 1X network. In the area where there is signal, it allows you to go surfing on the Internet, browse the web pages, and send & receive Emails.

2. Specification

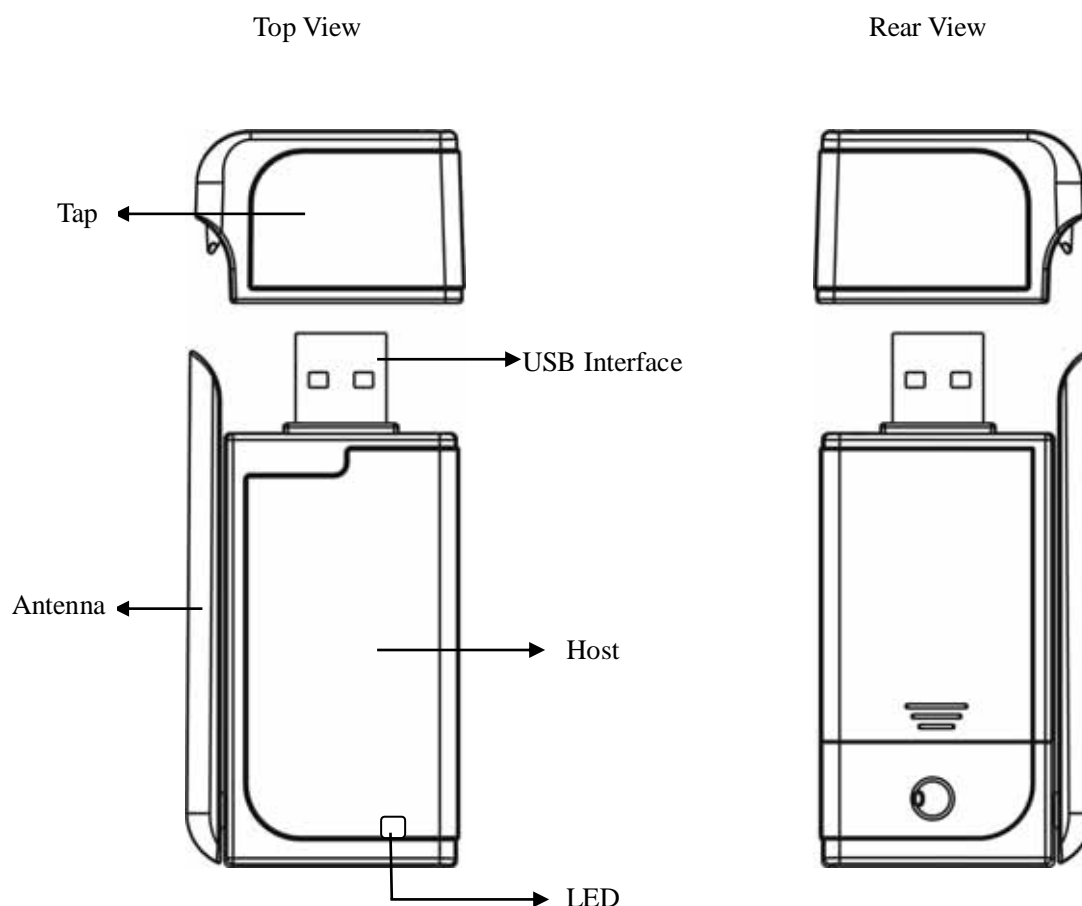
Transmitting Frequency	452.625-456.850MHz
Receiving Frequency	462.625-466.850MHz
Stability	Fc±300Hz
Dimensions (L×W×H)	80 mm ×36 mm×12.8mm
Weight	38.7g
Data Rate	Max. down-link transmission rate: 2.4Mbps, Max. up-link transmission rate: 153Kbps
Current	5V (using USB interface supply)
Current Consumption	Sleep: 5mA Max.: 480mA
Transmitting Power	224mW

3. Precautions

- Please don't use the product near flammable or explosive materials because it might cause failure or fire.
- Keep the product away from high temperature, humidity, or dust because it might cause failure.
- Avoid shock, cast or impact. Please keep the product well when you don't use it.
- **Do not unplug the antenna. Damage cause by misuse is not covered by this warranty.**
- Don't use the product near the place where is weak signal or high-precision electronic device because the magnetic interference might cause the misoperation of electronic device or other problems.
- **Please make sure to quit the application before pulling out the terminal, otherwise it would damage the terminal or affect the normal operation of the system.**
- Please don't insert or pull out the card with great force to avoid damaging the interface.

4. Appearance

4.1 Introduction



LED status descriptions:

LED	Insert the data terminal	Network Registered		There is service or searching the network	
		EV-DO	1X	EV-DO	1X
Yellow	ON	OFF	Slow Flash	OFF	Quick Flash
Green	ON	Slow Flash	OFF	Quick Flash	OFF

4.2 Operation Guide of Data Cable

Generally, the Data Terminal could be directly connected with USB port. You could also connect the Data Terminal with PC by using the accompanying data cable, as shown in the following figure. Connect Interface with Data Terminal, and interface with PC's USB port. If the

power supply from USB port is insufficient, connect both interface and with USB port together.



5. Install and Uninstall

System Requirements:

The Data Terminal supports the following operating system:

- Windows 2000
- Windows XP

PC minimum configurations:

CPU	Pentium-II/233MHz
USB interface	2.0 (USB1.0 and 1.1 compatible)
Optical Drive	CD-ROM (for installation only)
Memory	64 MB
Disk Space	50 MB (used for installation of application)

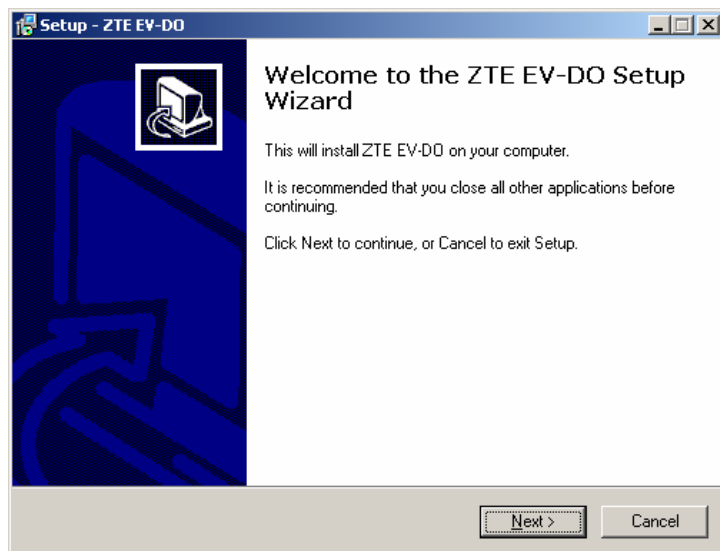
5.1 Windows 2000

5.1.1 Install

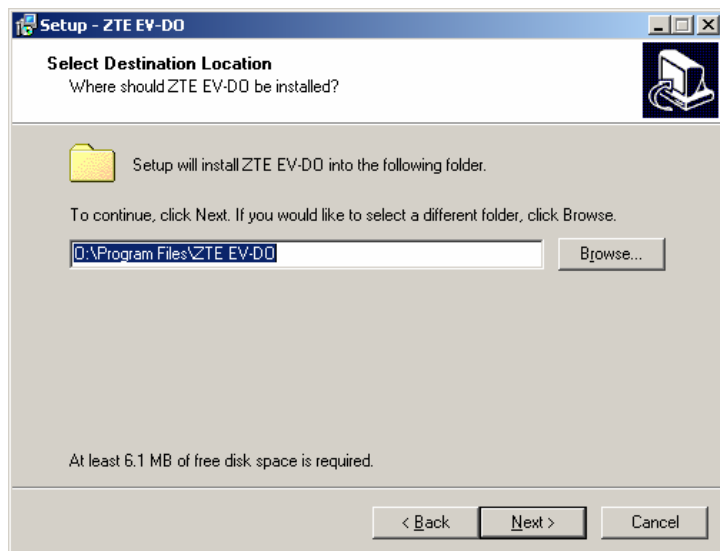
Note:

Do not insert the Data Terminal before installation.

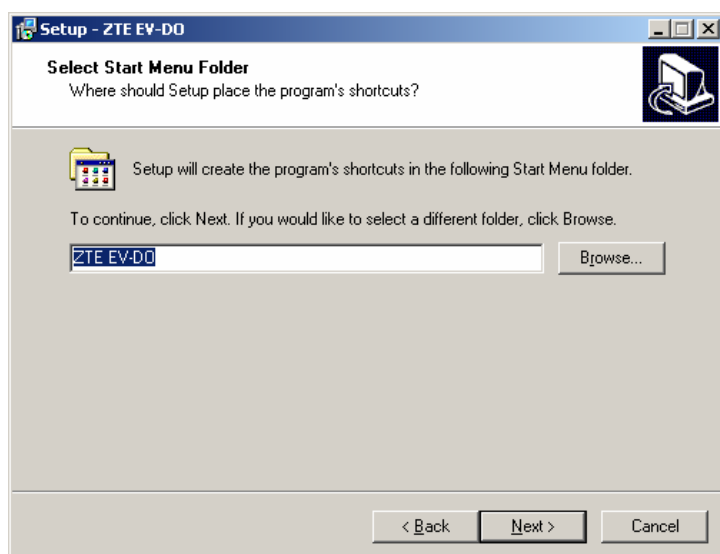
- 1、Find “Setup.exe” firstly in Data Terminal CD-ROM, double-click it to display the Welcome picture, and then click “Next”;



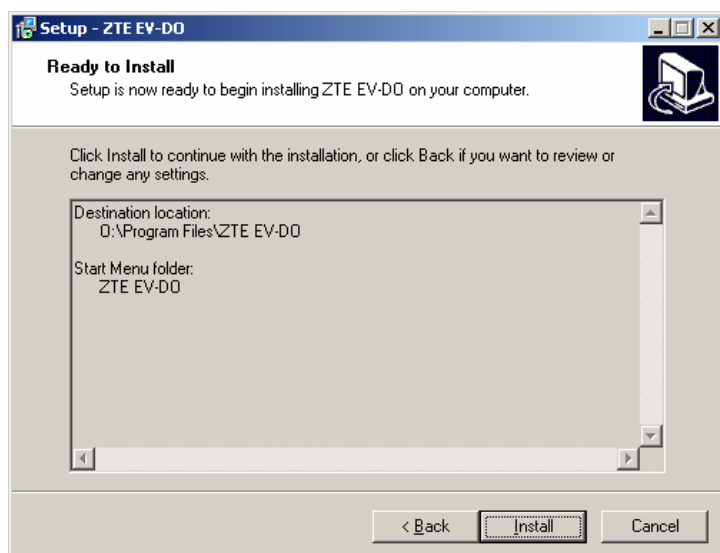
- 2、Select the location where you want the program to be installed, and then click “Next”;



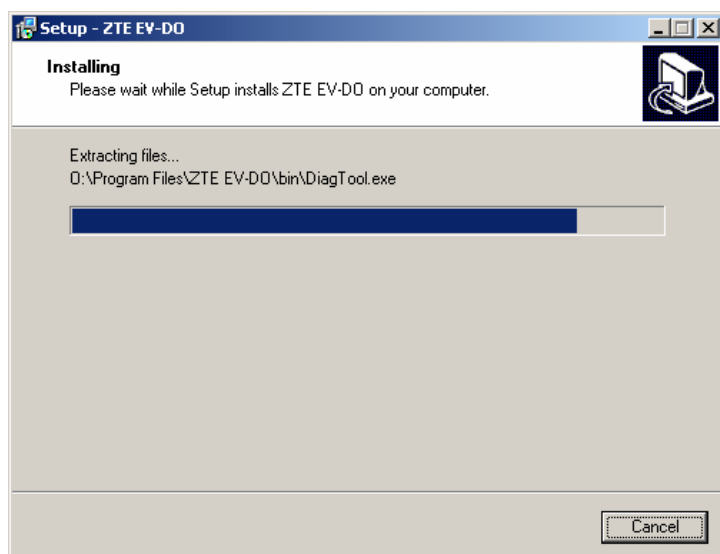
3、 Select Start Menu folder, and then click “Next”;



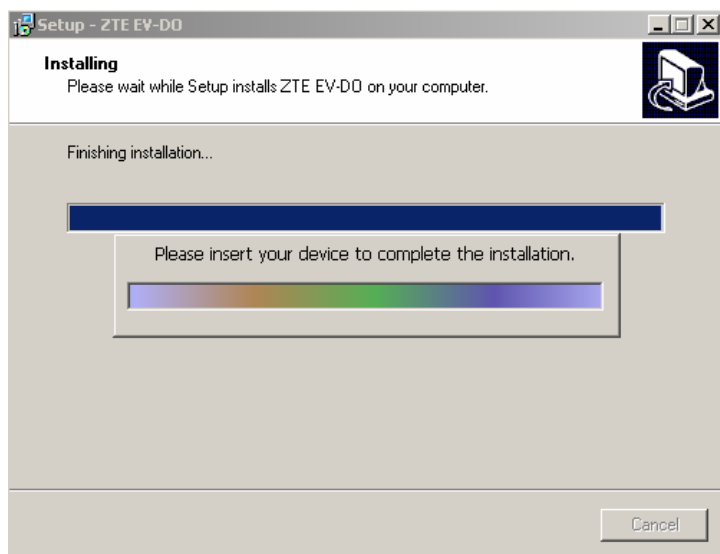
4、 When you see the window below, please click “Install”;



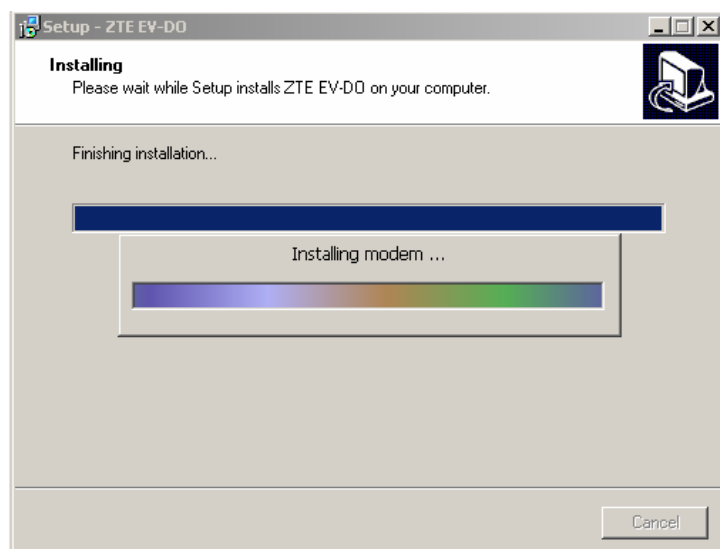
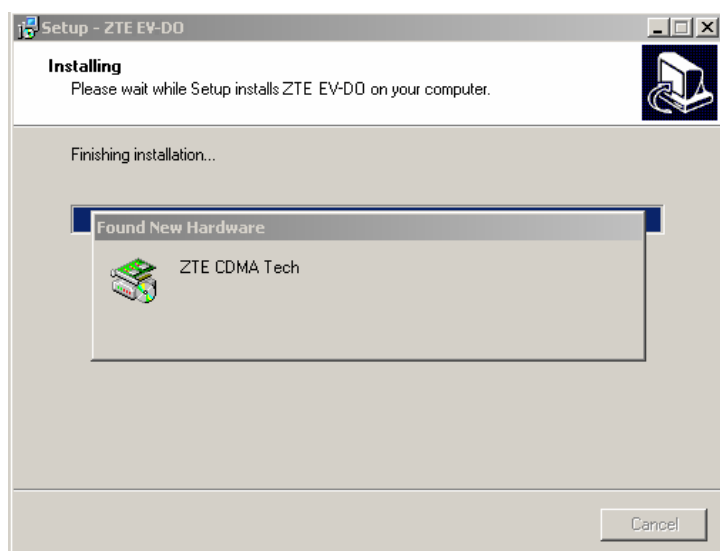
5、 Please wait for installation.



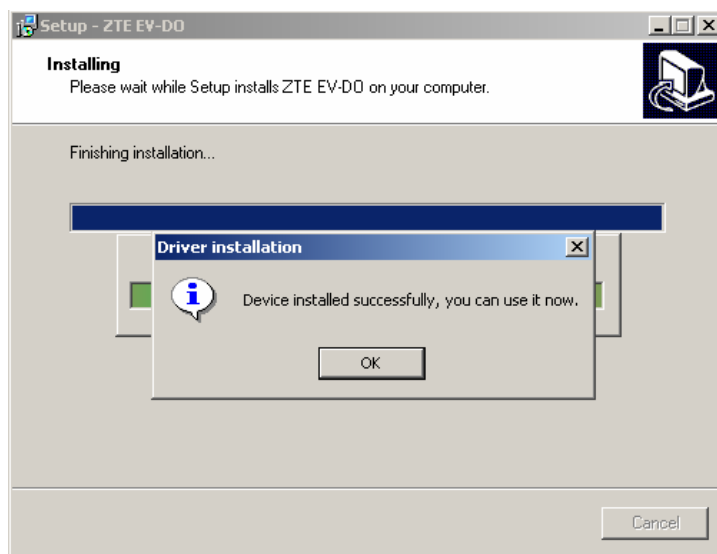
6、 Please insert the Data Terminal into USB interface if the system prompts you to insert the hardware (If it has been inserted, please unplug it and insert again.)



7、 The system shall find the new hardware and install the driver automatically. Just wait a minute;



8、The driver is installed successfully. Please click “OK”;

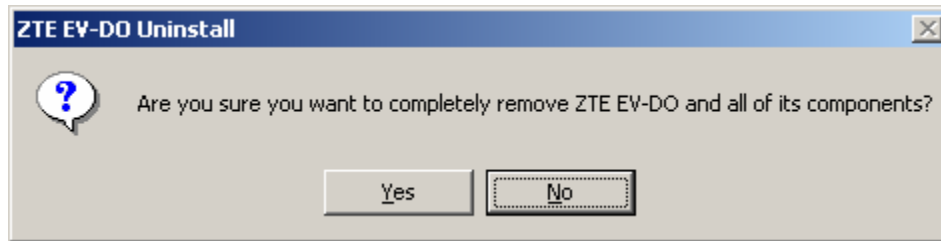


9、Click “Finish” to close the last screen of the wizard. Now you can start the application for Data Terminal.

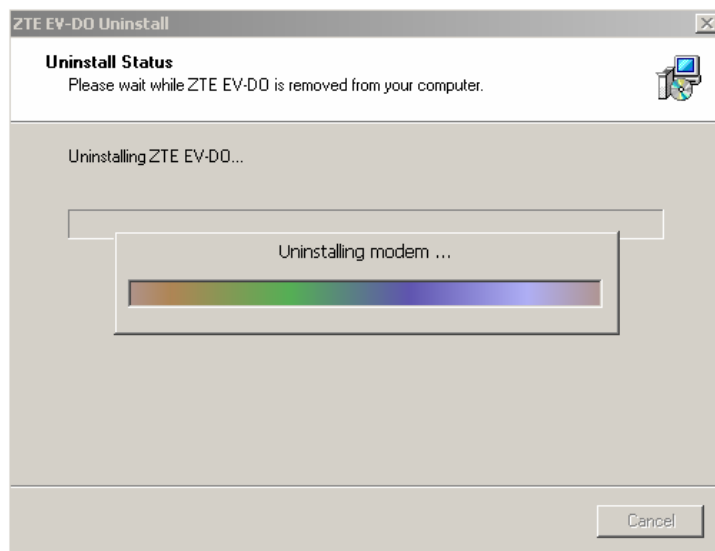


5.1.2 Uninstall

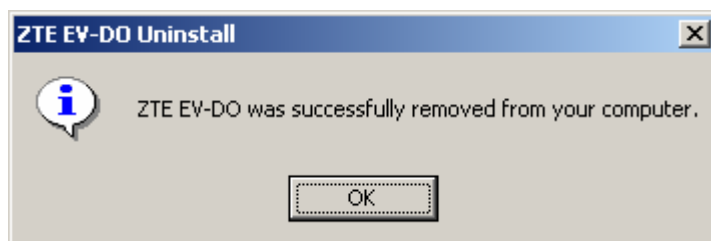
1、Select Start -> Programs -> ZTE EV-DO -> Uninstall ZTE EV-DO. Click “Uninstall ZTE EV-DO”, and you will be asked if you want to remove the program. Click “Yes”;



2、Please wait;



3、Click “OK” when un-installation is completed;



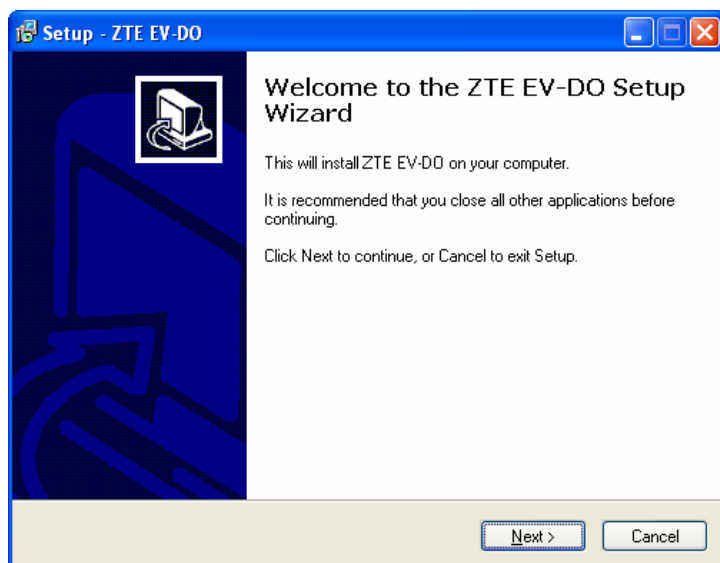
5.2 Windows XP

5.2.1 Install

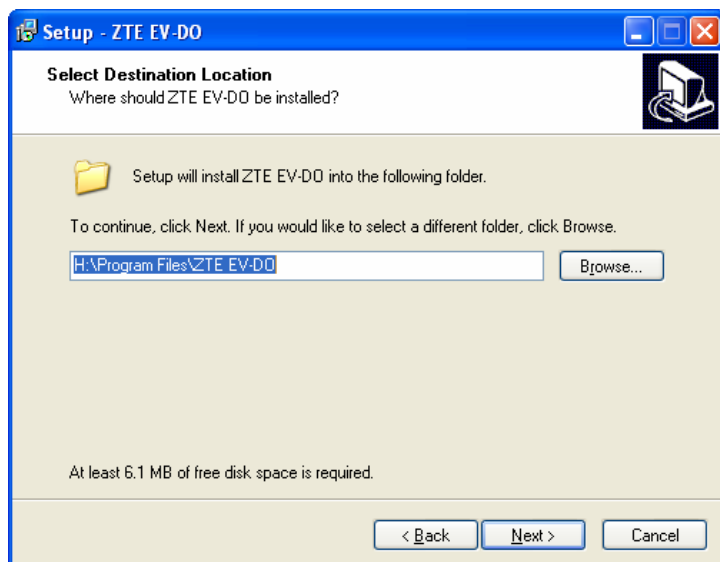
Note:

Do not insert the Data Terminal before installation.

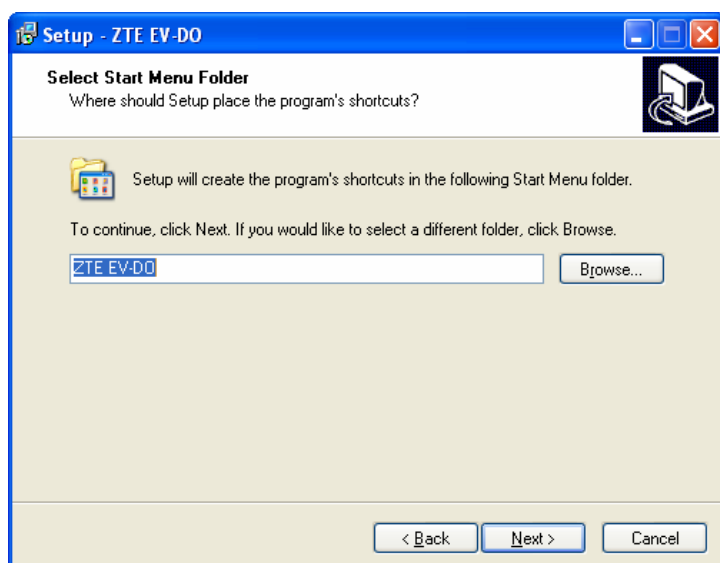
- 1、 Find “Setup.exe” firstly in the Data Terminal CD-ROM, double-click it to display the Welcome picture, and then click “Next”;



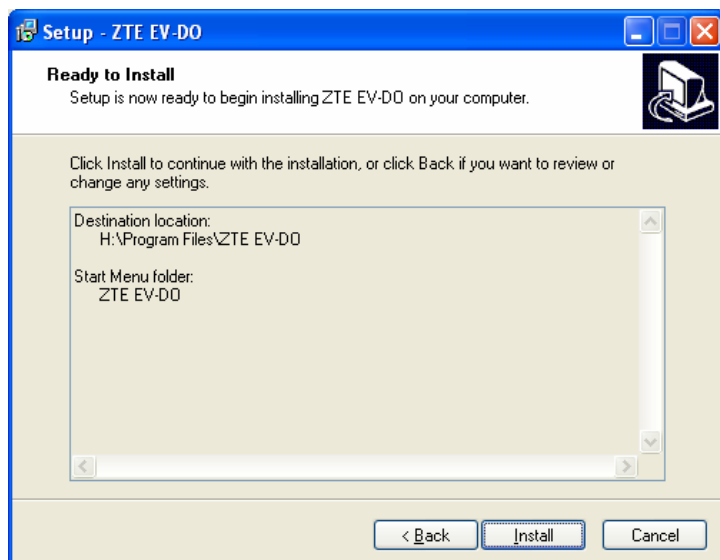
- 2、 Select the location where you want the program to be installed, and then click “Next”;



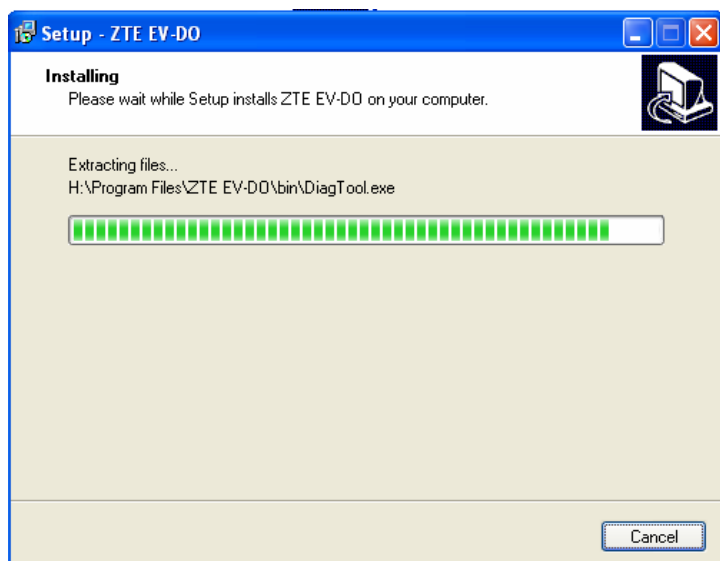
3、 Select Start Menu folder, and then click “Next”;



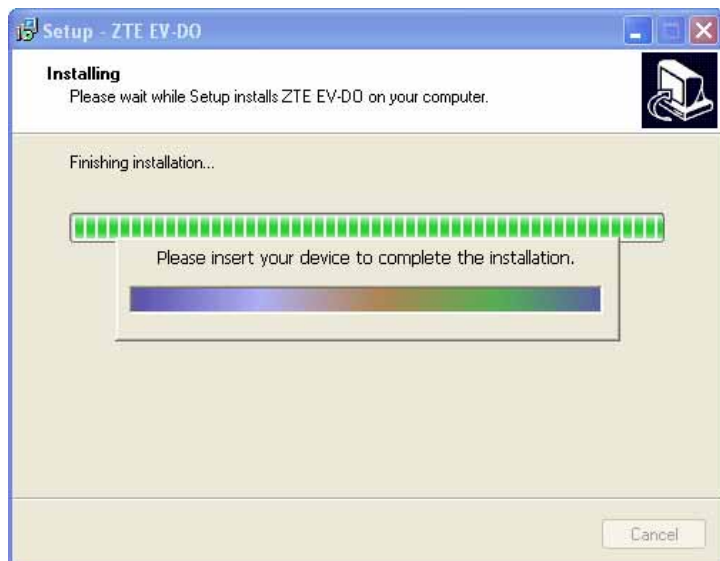
4、 When you see the window below, please click “Install”;



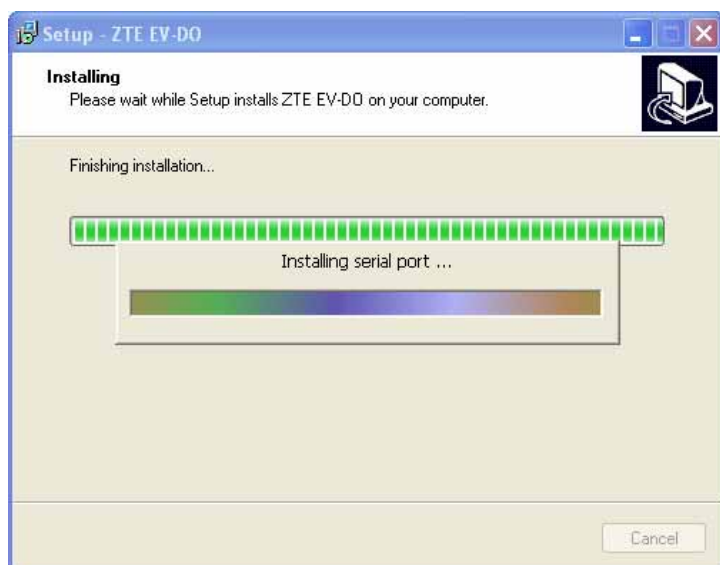
5、 Please wait for installation. This process will take a few minute;

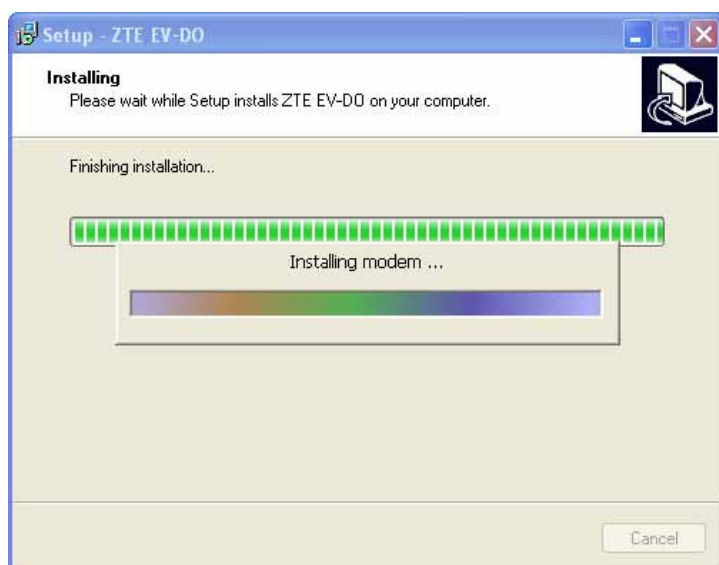


6、 Please insert the Data Terminal into USB interface if the system prompts you to insert the hardware (If it has been inserted, please unplug it and insert again.)



7、 The system shall find the new hardware and install the driver automatically. Just wait a minute.(Please ignore the prompt during the installation, such as “USB device not recognized” or “Your hardware might not be able to work normally because there is an error during the hardware installation.”)

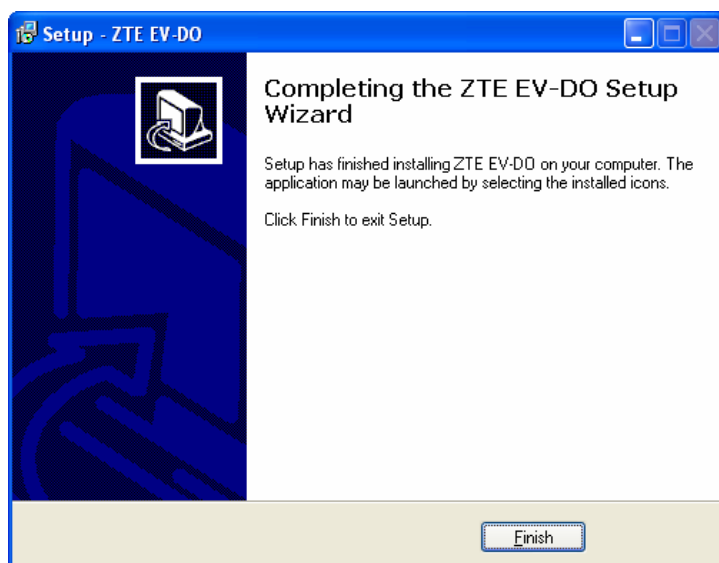




8、 The driver is installed successfully. Pleas click “OK”;

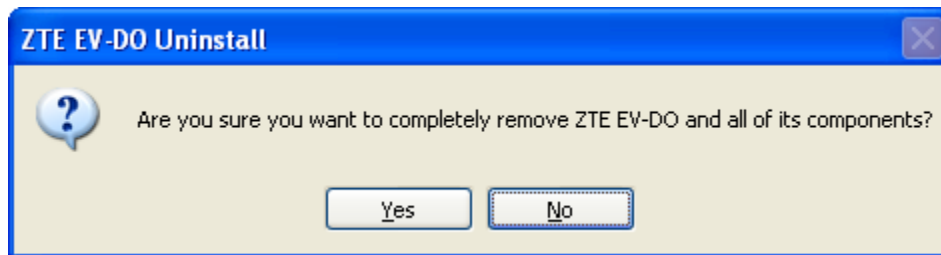


9、 Click “Finish” to close the last screen of the wizard. Now you can start the application for data terminal.

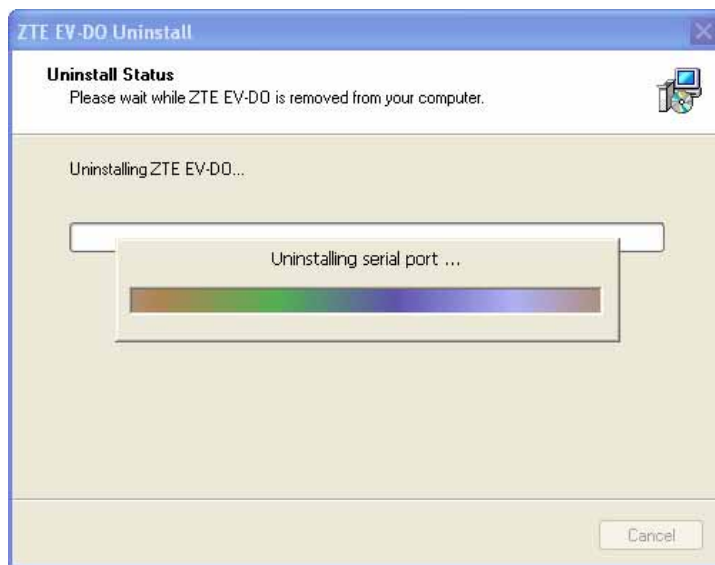


5.2.2 Uninstall

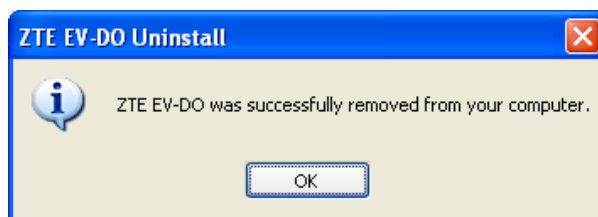
1、 Select Start -> Programs -> ZTE EV-DO -> Uninstall ZTE EV-DO. Click “Uninstall ZTE EV-DO”, and you will be asked if you want to remove the program. Click “Yes”;



2、 Please wait;



3、 Click “OK” when un-installation is completed.

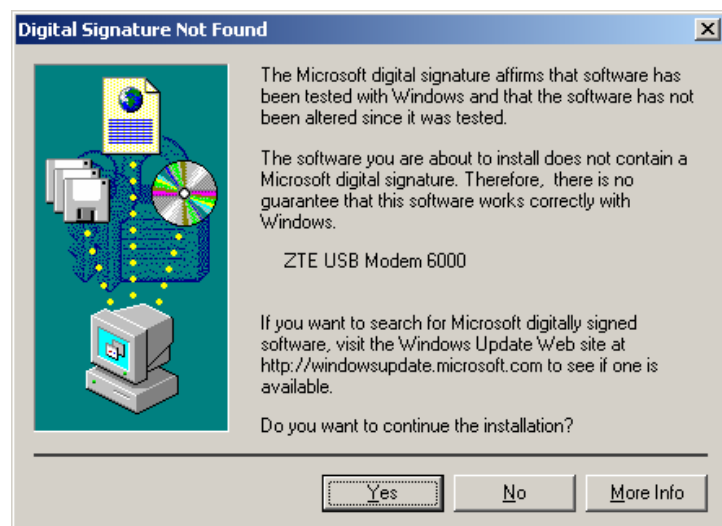


5.3 Manually Install Through Other USB Port

If you want to use the data terminal through other USB port after the driver is successfully installed through one USB port, please follow the procedures below to manually install the driver. During the installation, please make sure to quit other applications.

5.3.1 Windows 2000

Insert the data terminal to another port, and the system will find new hardware and automatically install the driver. When the following prompt appears, click “Yes”.

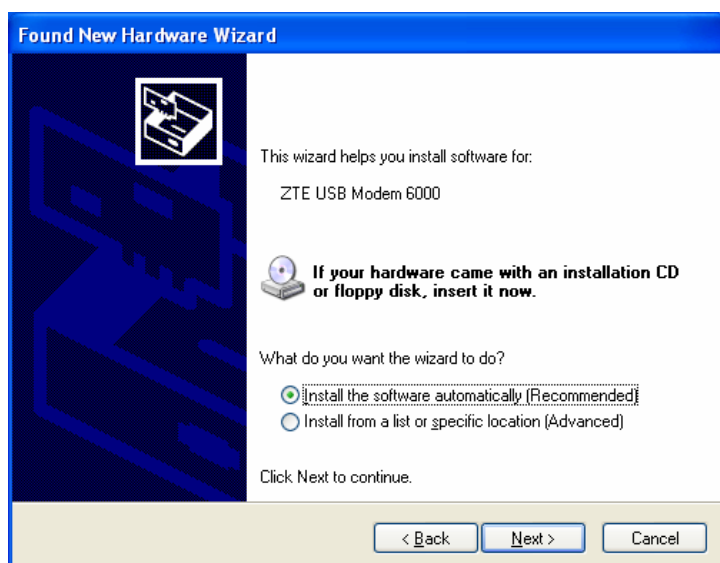


5.3.2 Windows XP

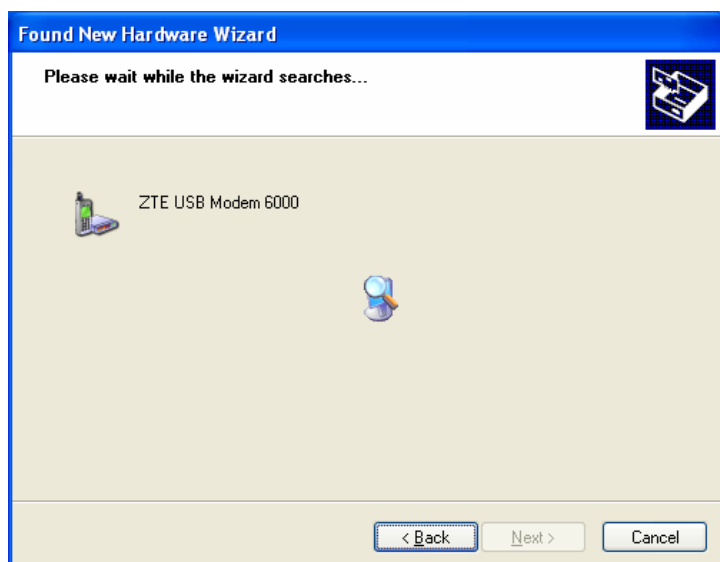
- 1、 Insert the data terminal to another port, and the system will find new hardware. Select “No, not this time”, and then click “Next”;



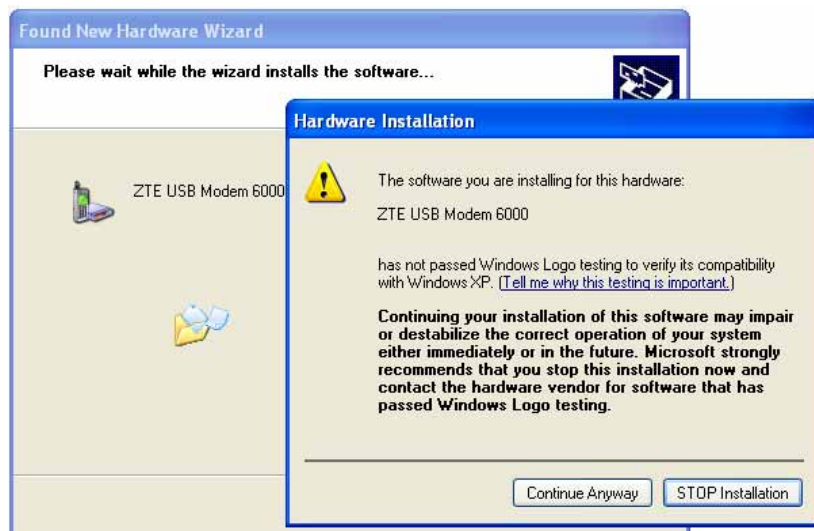
- 2、 Select “Install the software automatically”, and then click “Next”;



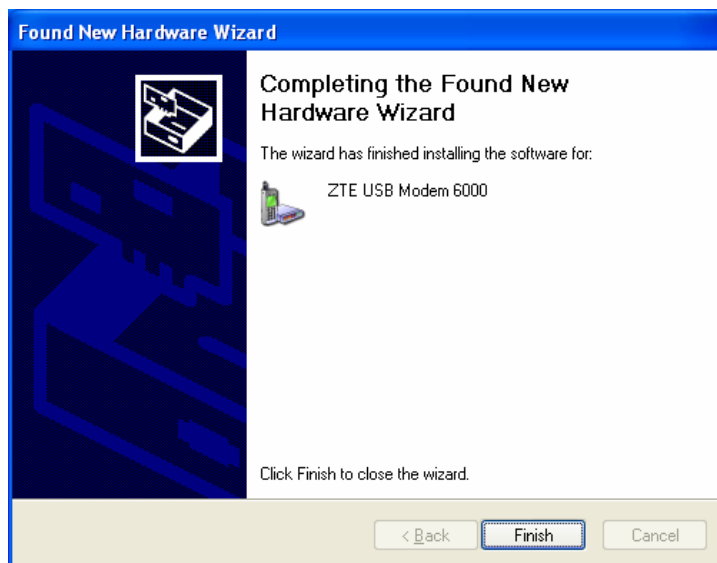
- 3、 Wait for the installation wizard to search for the installation driver;



- 4、 Please click “Continue Anyway” when the following interface appears;



5、Click “Finish”;



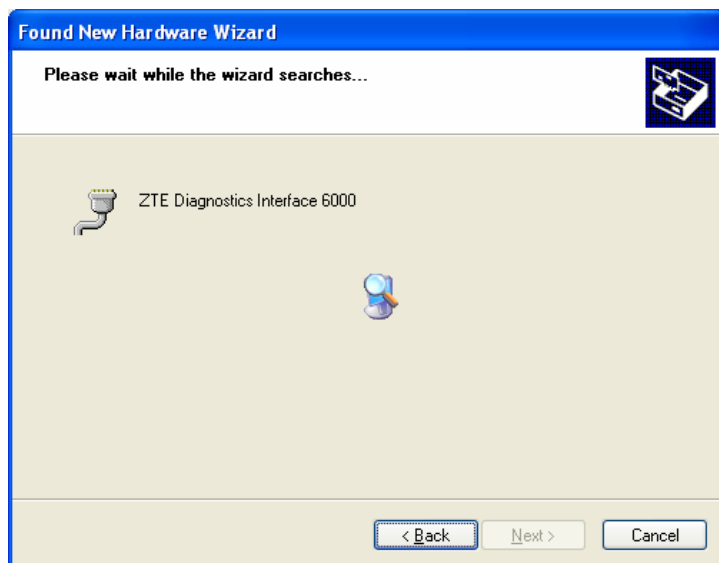
6、Select “No, not this time ”, and then click “Next”;



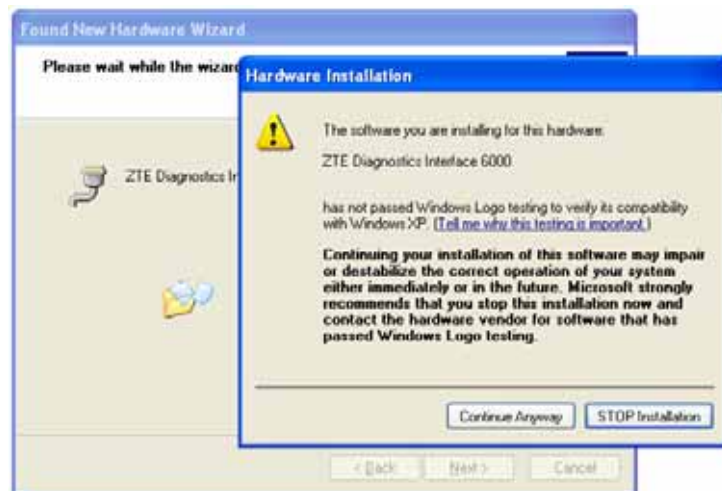
7、Select “Install the software automatically”, and then click “Next” to continue;



8、 Wait for the installation wizard to search for the installation driver;



9、 Please click “Continue Anyway” when the following interface appears;



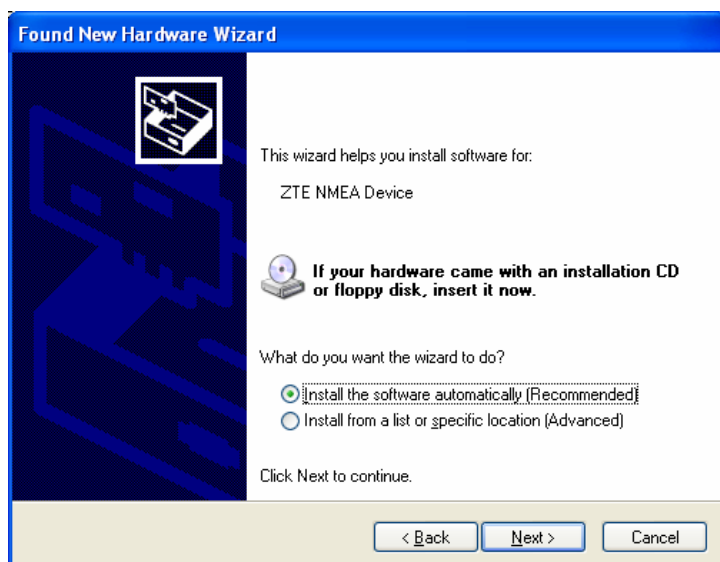
10、 Click “Finish”;



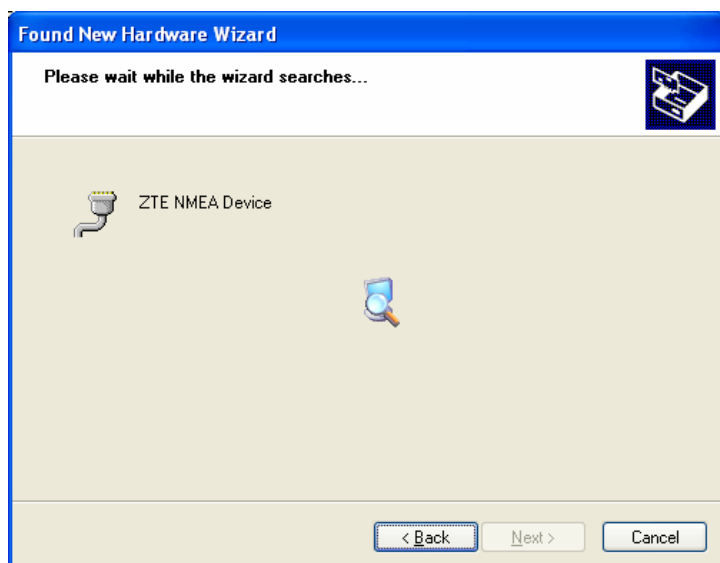
11、 Select “No, not this time ”, and then click “Next”;



12、 Select “Install the software automatically”, and then click “Next” to continue;



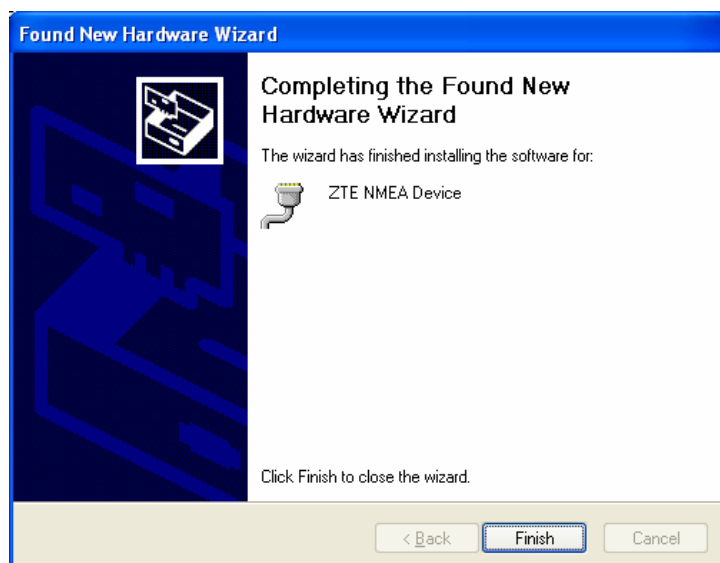
13、 Wait for the installation wizard to search for the installation driver;




14、 Please click “Continue Anyway” when the following interface appears



15、 Click “Finish” to install the driver successfully.



6. Run the Application

After the application is installed successfully, the application icon  will appear on your desktop. Double-click this icon or select from Start -> Programs -> ZTE EV-DO -> ZTE EV-DO. Run the application to display the following user interface.



The icons on the interface are used to access the function, which indicate as below:



Connect/Disconnect



Open URL



Connection Records












Setting



Help



Status Bar:

	EV-DO Indication
	1X Indication
	Signal strength indication. The more bars, the stronger signals
	CDMA network unavailable
	Network Connection
	Sleep mode
	In Roaming
	No R-UIM card inserted
	R-UIM card inserted

7. Connect/Disconnect



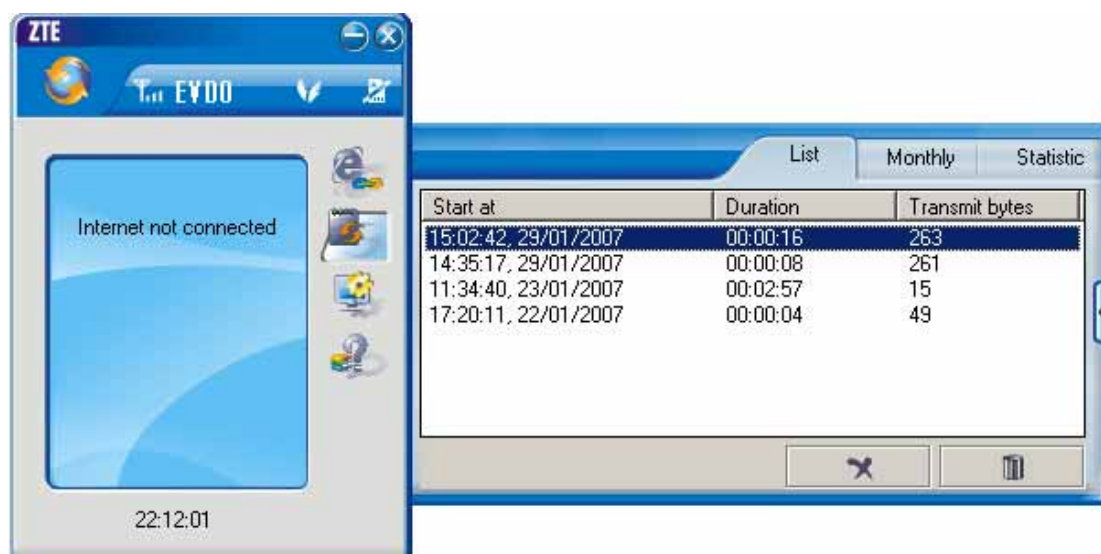
Connect


- ✧ Click  icon to set the relevant parameters. For details, please refer to Chapter 9 “Setting” for details.
- ✧ Click  icon at the left-up corner of the interface.
- ✧ After connecting to Internet, the current network information will appear on the interface. Double-click any place in the display area to view the connection records.

Disconnect

After connecting to Internet, click the rotating icon  at the left-up corner of the interface.

8. Connection Records




Click  icon to view connection records. Connection records save the previous relevant information including Start at, Duration and Transmit bytes, which help you know the status easily.

By switching among “List”, “Monthly” and “Statistic”, you could inquire the records every time, by month or by time.


Note:

The relevant information contained in connection records are just for user's reference rather than the charging basis.

Delete Connection Records

Click  button to delete the records you have selected on the interface.


Clear Connection Records

Click  button to delete all the records.

9. Setting



Network Connection Setting

- ✧ Click  icon to set up the relevant parameters.
- ✧ After the setting, click “Apply” button to save the settings on the current interface.
- ✧ Click “Default” button and then “Apply” button to restore the settings on the current interface to factory default.

Note:

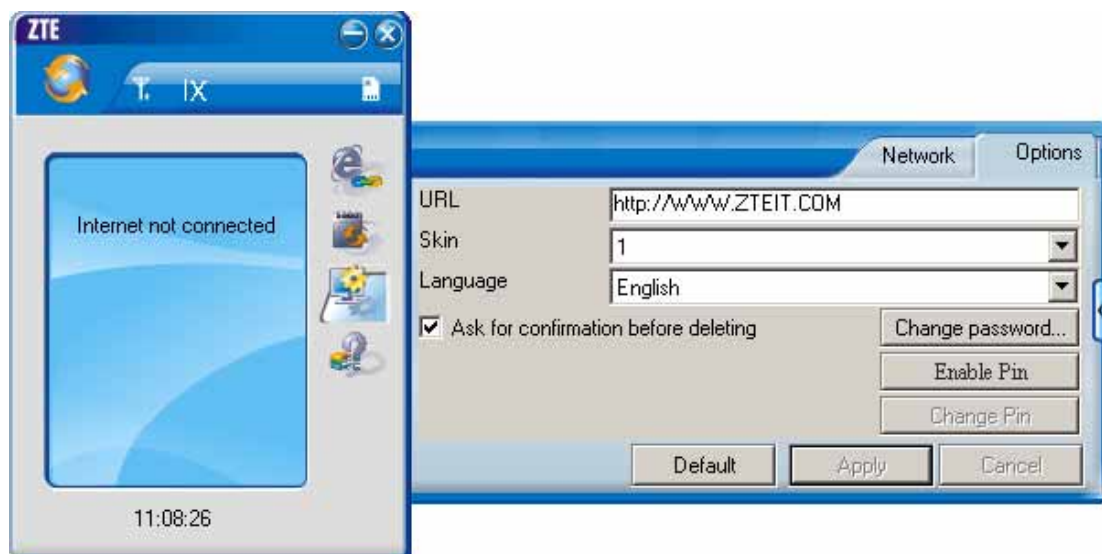
The default network setup parameters are as below. Different regions may have different network setup parameters, so please consult your local telecom operator.

Phone: #777

User: ESN number

Password: cdma

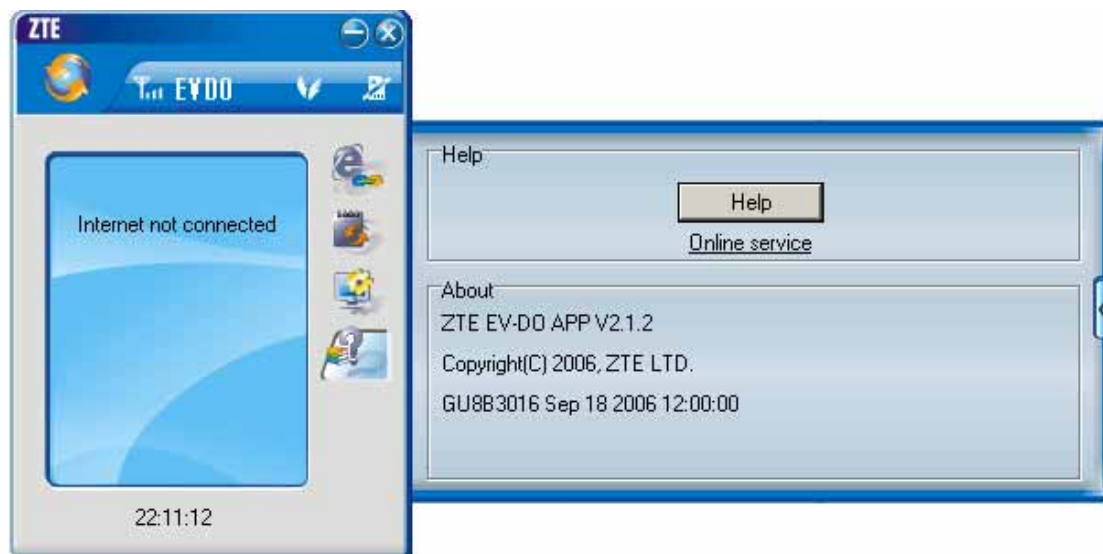
NB! ESN number can be found on the box of terminal or on the terminal itself.




Other Setting:

- ✧ Click “Options” to switch the interface, and you could set URL and select the skin, language, etc.
- ✧ Click “Change Password” button to set lock device. The password is required when you start the application. The setting has nothing to do with "Default" button.
- ✧ If your data terminal needs R-UIM card, please click the button “Enable Pin”. PIN code is needed when the application is started. The setting has nothing to do with "Default" button.
- ✧ After that, click “Apply” button to save the settings on the current interface.
- ✧ Click “Default” button and then “Apply” button to restore the settings on the current interface to factory default.


10. Help



Click  button to view the help file.

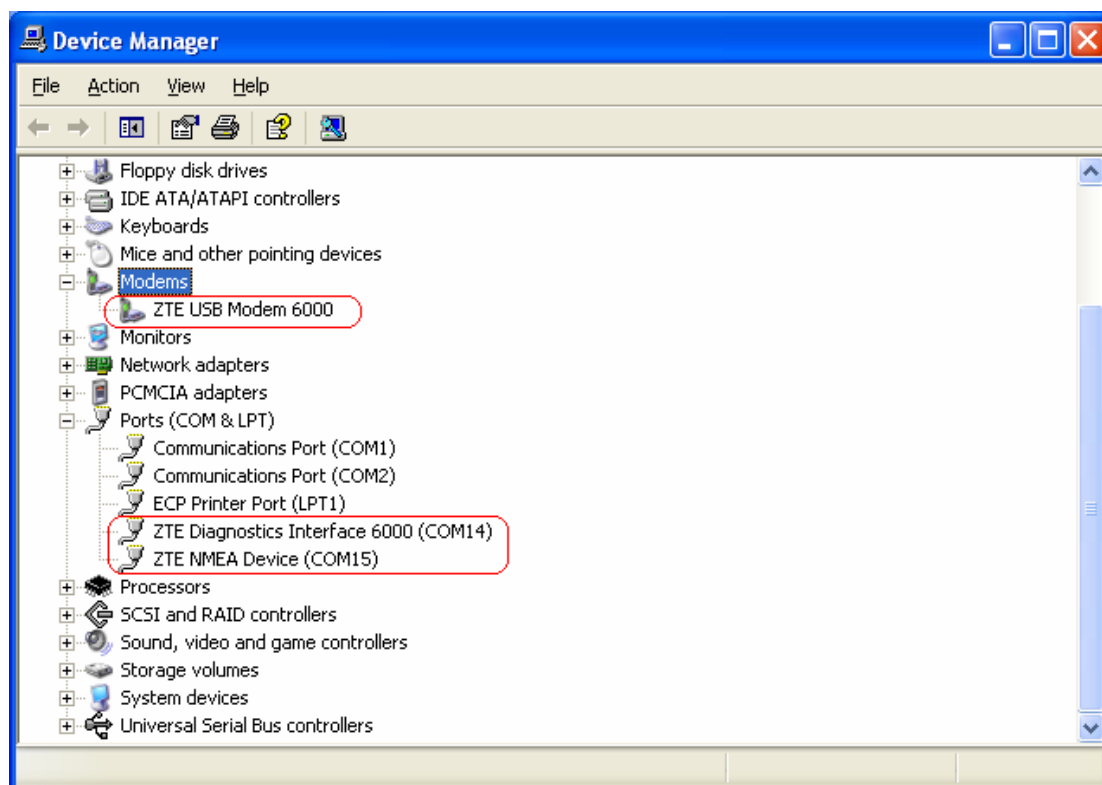
- ✧ Click “Help” button to view the relevant help file; click “Online service” to enter our company’s website.
- ✧ You could view the software version information under “About”.

11. Connect to the Website

Click  button to directly connect the website you set. For details on the website setting, please refer to Chapter 9 “Setting”.

12. Trouble-shooting

After the installation, go to device manager and find “ZTE USB Modem 6000” under “Modem” and “ZTE Diagnostics Interface 6000”, “ZTE NMEA Device” under “Port”. If they are not found, please remove the software and reinstall.



Common Failures Table:

Failures	Causes	Solutions
Error occurs when running setup.exe file.	The setup file may be damaged.	Please download the program on our website WWW.ZTEMT.COM and reinstall it.
Open port failed.	Directly run the software before the Data Terminal is plugged in.	Close the software, plug in the Data Terminal and run it again.
	The port is occupied by other applications, such as "Hyper terminal", or the software is already run.	Close relevant software and run the software again.
No R-UIM card.	R-UIM card is not inserted.	Insert R-UIM card.
	R-UIM card isn't inserted properly. Sometimes the front side and back side are confused.	Please refer to section 4.2. Properly insert R-UIM card.
	R-UIM card is damaged. Validate by using a CDMA terminal.	Replace R-UIM card.
No signal indicated.	Antenna is not connected to the Access Box.	Insert the antenna into the Data Terminal.
	Out of the network service area.	Make sure it is in the CDMA network service area.
	The antenna or RF component is damaged.	Replace relevant damaged parts.
Dialing failed	Wrong setting of parameters (Phone, User, Password)	Correct the parameter settings. Consult your service provider for details.
	Not enough money in R-UIM card.	Consult your service provider for details.
	Network congestion or failure.	Try again later.
Internet connection failure.	The Data Terminal is being connected. (It usually occurs when the Internet connection is immediately made after the call is dialed)	Reconnect.
	Poor network signal.	View signal strength indication and check if the antenna is properly inserted.
The driver might be unable to work and the application is unable to run normally if the terminal is pulled out and plugged in again when the application is being used under Win2000 operating system (SP4). In this case, the device in device manager will be marked with yellow exclamation mark, and the system must be restarted to run normally.	The operating system needs installing Update Roll 1 patch for Win2K SP4.	Please download the patch from the following web site and install it. http://www.microsoft.com/downloads/details.aspx?familyid=B54730CF-8850-4531-B52B-BF28B324C662&displaylang=en

If the problems cannot be solved after the above handling, please call 86-755-26010555 or feed back your information directly by sending emails to zte_mobile@zte.com.cn for customer service. We will reply to you as soon as possible and provide you with high quality after-sales services.